



# TWISTED-IN-WIRE BRUSHES CATALOG



**CUSTOM BRUSHES  
ENGINEERED FOR DEEP CLEANING**





Allied K&R was founded in 1927 and started to manufacture high quality twisted-in-wire brush, fiber broom and mops. Today, Allied K&R is located in DUMBO, Brooklyn, NY and specializes in twisted-in-wire brush. In addition to stock brushes, Allied K&R is committed to providing high quality build-to-print twisted-in-wire brushes.

For close to 100 years, Allied K&R has been committed to manufacturing high quality custom brushes. Our USA manufacturing capabilities feature fast lead times, low minimum order quantities, superior craftsmanship and customizable specifications.

Our twisted-in-wire brushes clean a variety of industries, from the harsh and high temperatures of food processing services to the reactive chemicals of medical laboratories. Let us guide you to the appropriate stock brush or customize one for your application.

Allied K&R is a proud member of American Brush Manufacturers Association and is a U.S. Food and Drug Administration (FDA) registered manufacturer.



**Phone:** (718) 625-6610  
**Fax:** (718) 643-3741  
**Email:** [info@alliedkr.com](mailto:info@alliedkr.com)

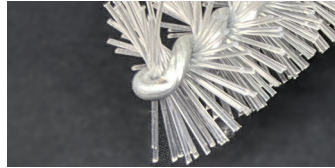
39 Pearl Street  
Brooklyn, NY 11201  
USA

[WWW.ALLIEDKR.COM](http://WWW.ALLIEDKR.COM)

# WIRE STYLES

## WIRE TYPE

**Galvanized steel wire** is wire coated in zinc for corrosion resistance. Its rust-resistance properties are ideal for cleaning applications and economical for single use.



**Stainless steel wire** is steel wire mixed with chromium for corrosion resistance. Its rust-resistance is superior to galvanized steel wire for long-term exposure, but it is more costly.



**Coated steel wire** has a plastic jacket over a galvanized steel wire. The coating provides a softer contact area, additional corrosion resistance and smooth surface.

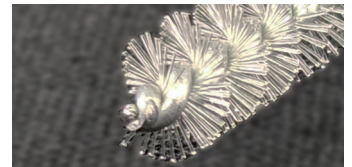


## STEM DIAMETER

**0.280"** is our largest stem diameter. The large wire gauge is strong, stiff, holds thicker filament material and can be more dense.



**0.065"** is our smallest stem diameter. The small wire gauge allows a flexible brush and holds finer filament material, but it will be less dense.



## STEM CONSTRUCTION

**Single-Stem Single-Spiral** has brush filament twisted between two stem wires. This is capable of a smaller brush trim diameter and holds thinner filament.



**Double-Stem Single-Spiral** has brush filament twisted between four stem wires. This holds more and thicker filament.



# BRUSH STYLES

## TIP STYLE

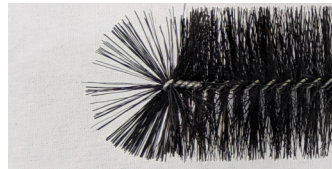
**Cut off** - A cut off tip has an exposed stem. This is simple and cost-effective if the tip does not require filament to clean or a soft contact to prevent scratches.



**Continuous** - The tip has a continuous stem holding the filaments. It has a softer contact than a cut off tip, and it holds the filament more securely.



**Radial / Rosebud** - The stem and filament are looped together, so there is more filament at the tip for a deeper cleaning.

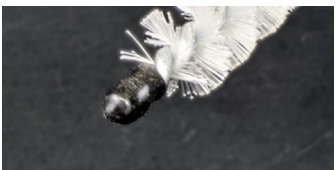


**Fan** - A fan tip is a cut off tip with a bend to shape the filaments in a fan. This can provide a soft contact and clean the tip of the surface.

**Wing** - A wing tip is a tied tufted tip with additional two fan tips for a larger cleaning contact.



**Tied Tufted** - A tied tufted has a wire spun around filament to create a pointed filament tip.



**Plastic** - A plastic tip is added to a cut off tip. This softens the tip to prevent scratches.



**Brush Loop** - The brush part is bent in a loop or other shape to allow filament contact in a specific shape or direction.

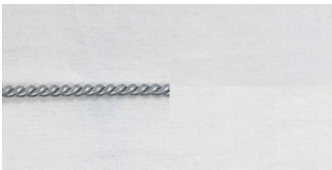
# BRUSH STYLES

## END STYLE

**Loop end** is the stem looped in circular or oval shape to be hung on a hook.



**Plastic/wood handle** is added on top of the stem for an easier grip.



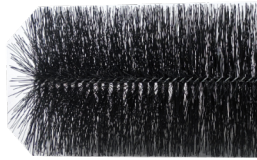
**Cut off end** allows users to incorporate brushes into custom equipment or applications.



**Brush end** provides cleaning to both sides of a brush.

## TRIM DIAMETER

**Brush trim diameter** can range from 0.125" to 12" in a straight cylindrical shape depending on the wire gauge.



A **tapered trim diameter** will be trimmed from one trim diameter to another trim diameter.



**Special trim shapes** are possible for custom brushes.

## PART LENGTH

**Brush part length** may range from 0.500" to the full overall length. A partial part length allows handles and caps to be inserted on the wire ends and different bend tip styles.



# FILAMENT STYLES

## FILAMENT DIAMETER

**Filament diameters** can range from 0.004" to 0.032". It will proportionally affect the wire gauge needed. A larger filament diameter needs a large wire gauge to hold the filaments together. However, a large wire gauge will be difficult to hold small filament diameters.



## FILAMENT SHAPE

Synthetic Filament can be leveled or crimped. **Level filament** has a straight consistent shape. It will follow the path of the twisted wire, stay close together and leave a gap between each turn of the wire.



**Crimped filament** has a sine wave shape. Crimped filament will spread out, reducing the gaps between filaments and the density of the filament. Often, it is specified in waves per inch.



## FILAMENT MATERIAL

**Nylon** is one of the most popular synthetic polymers. It has high abrasiveness and high heat resistance. The Nylon type can change the absorbency rate and chemical resistance. It's ideal for soft wet cleaning and abrasive applications.



**Polybutylene terephthalate (PBT)** polyester is a thermoplastic polymer. It has excellent bend recovery, does not absorb water and has excellent chemical resistance. It's ideal for hard wet applications such as a paintbrush.



**Polypropylene (PP)** is one of the most popular thermoplastic polymers. It has excellent bend recovery, does not absorb water and great flex fatigue.



**Perfluoroalkoxy alkanes (PFA)** is a fluoropolymer. It has a high temperature resistance, chemical resistance and does not absorb water. It's ideal for cleaning high temperature dry or wet cooking surfaces.

**Tampico** is a natural vegetable fiber made from agave lechuguilla plant grown in Mexico. It is heat, alkali and acid resistant. Its slight abrasiveness and high absorbency rate make it ideal for wet cleaning and scrubbing applications.



**Cotton** is a natural fiber made from gossypium plant grown in subtropical regions of the Americas. It is highly absorbent and soft. It's ideal to pick up or apply liquids and fine materials.



**Horsehair** is hair from a horse's mane or tail. It is soft and non-conductive. It's ideal for scratch-free dry cleaning and buffing.



**Natural Bristle** is hair from the spine of a pig, hog or boar. It is non-conductive and stiff with split ends called flagged. Flag ends are ideal for dry cleaning such as dust.

Automotive brushes are effective tools to cleaning and detailing commonly dirty areas of a vehicle including wheels and front grills. The brush needs to be abrasive enough to remove road debris but gentle enough to prevent scratching the protective layer. We make the ideal brushes for automotive cleaning and detailing. Automotive brushes are used to clean wheel spokes, front grills, air ducts, exhausts and tires.

Our stock automotive brushes clean various parts of a vehicle without damaging the protective surface. All stock brushes are readily available to ship. You can find the stock specifications below. If you need any adjustments, contact us or submit a custom brush request.

| ITEM # | DESCRIPTION                         | FILAMENT MATERIAL        | BRUSH DIAMETER           | BRUSH LENGTH | OVERALL LENGTH | TIP STYLE  | END STYLE                     |
|--------|-------------------------------------|--------------------------|--------------------------|--------------|----------------|------------|-------------------------------|
| 987400 | Spoke Wheel Brush (Coated Wire)     | Level Tampico Colored PP | 2" tapered to 3/4"       | 6 1/4"       | 11"            | Continuous | 4 3/4" Plastic Handle         |
| 987410 | Spoke Wheel Brush (Galvanized Wire) | Level Tampico Colored PP | 2" tapered to 3/4"       | 6 1/4"       | 11"            | Continuous | 4 3/4" Plastic Handle         |
| 987421 | Spoke Wheel Brush                   | White Tampico            | 2 7/8" tapered to 1 1/4" | 11 1/2"      | 16 3/4"        | Continuous | 5" Wood Handle with Wire Hook |
| 984722 | Spoke Wheel Brush                   | Level Tampico Colored PP | 2 7/8" tapered to 1 1/4" | 11 1/2"      | 16 3/4"        | Continuous | 5" Wood Handle with Wire Hook |
| 987423 | Spoke Wheel Brush                   | Level Natural Nylon      | 2 7/8" tapered to 1 1/4" | 11 1/2"      | 16 3/4"        | Continuous | 5" Wood Handle with Wire Hook |

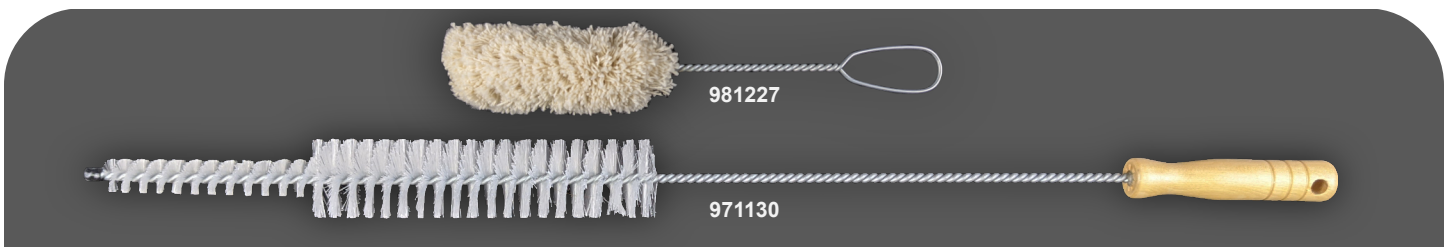
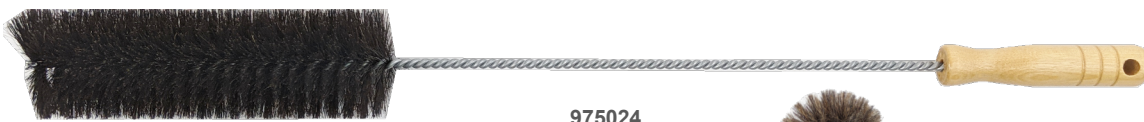


# DUSTER

Dusting brushes have a unique shape to capture dust or other debris, a soft filament to prevent scratching surfaces and a comfortable handle for easy and prolonged use. The brush shape is important to capture all the dust with one brush, which increases cleaning efficiency and decreases service time. Dusting is important to keep equipment clean, improve air flow and quality and maintain cleanliness. Duster brushes are made in unique shapes to clean ceiling fan blades, ceiling pipes or sprinklers, refrigerator coils or walls.

Our stock duster brushes capture dust and debris with their unique shapes to keep equipment and spaces clean. All stock brushes are readily available to ship. You can find the stock specifications below. If you need any adjustments, contact us or submit a custom brush request.

| ITEM # | DESCRIPTION             | FILAMENT MATERIAL           | BRUSH DIAMETER                            | BRUSH LENGTH | OVERALL LENGTH | TIP STYLE  | END STYLE          |
|--------|-------------------------|-----------------------------|---|--------------|----------------|------------|--------------------|
| 942103 | Clothes Brush           | Level Black Nylon           | 3 1/2" (Width)                            | 6 1/2"       | 11"            | Brush Loop | 4 1/2" Wood Handle |
| 970705 | Wall Brush              | Grey Horsehair & Poly Mix   | 11" (Width)                               | 5"           | 10 1/2"        | Brush Loop | 5" Plastic Handle  |
| 971130 | Refrigerator Coil Brush | Level Natural Polypropylene | 3/4" (4 1/2" long) & 1 3/4" (7 1/2" long) | 12"          | 27 1/2"        | Plastic    | 4 1/2" Wood Handle |
| 975024 | Radiator Brush          | Black Horsehair & Poly Mix  | 2 3/8"                                    | 7 1/2"       | 24"            | Continuous | 4 1/2" Wood Handle |
| 975036 | Radiator Brush          | Black Horsehair & Poly Mix  | 2 1/2"                                    | 7 1/2"       | 36"            | Continuous | 4 1/2" Wood Handle |
| 981227 | Cotton Swab Brush       | Cotton Yarn                 | 4"  | 2"           | 11"            | Fan        | 2 1/2" Oval Loop   |





Food serving entities need to maintain a clean food processing equipment in order to provide the best tasting meals to their customers. Food Service brushes have the appropriate shape and material needed to clean anything from harsh food buildup in deep fryer machines to acidic stains in delicate coffee urn containers.

Materials used in cleaning food processing equipment need to be food-grade safe. Filaments can become loose, so it is important for the filaments to be safe for consumption. Allied K&R is a U.S. Food and Drug Administration (FDA) approved manufacturer. Food service brushes are used to clean coffee urns, coffee makers, dishes, pastries, glass/jar containers or deep fryers.

Our stock food service brushes can handle harsh food and liquid build up on equipment. All stock brushes are readily available to ship. You can find the stock specifications below. If you need any adjustments, contact us or submit a custom brush request.

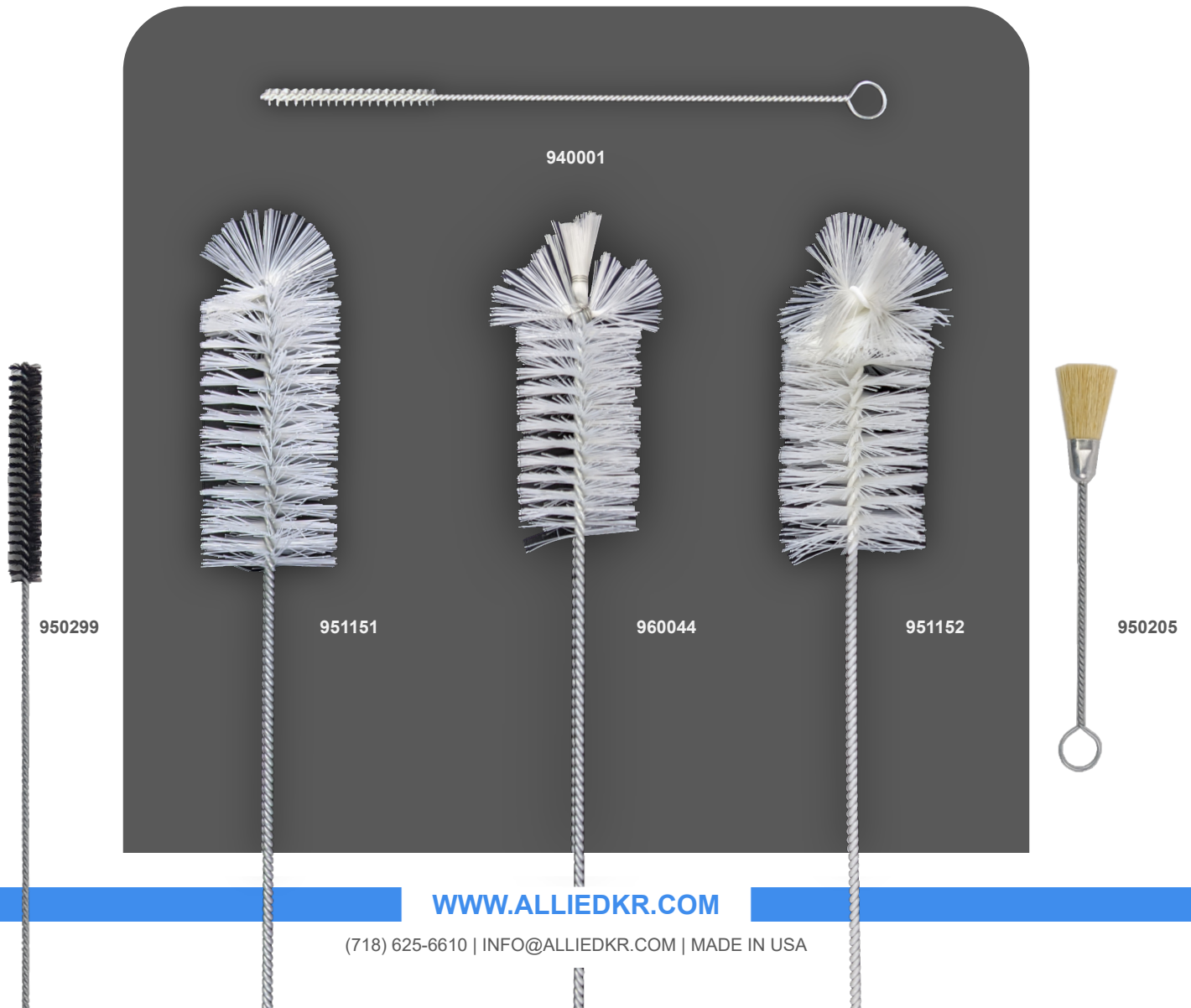
| ITEM # | DESCRIPTION      | FILAMENT MATERIAL             | BRUSH DIAMETER | BRUSH LENGTH | OVERALL LENGTH | TIP STYLE              | END STYLE             |
|--------|------------------|-------------------------------|----------------|--------------|----------------|------------------------|-----------------------|
| 950310 | Deep Fryer Brush | Level Natural PFA             | 1 3/8"         | 7 1/2"       | 28"            | Continuous             | 4 3/4" Plastic Handle |
| 950315 | Deep Fryer Brush | Level Natural PFA             | 7/8"           | 10"          | 25"            | Continuous – "L" shape | 4 3/4" Plastic Handle |
| 950320 | Deep Fryer Brush | Level Natural PFA             | 2"             | 8 1/2"       | 24"            | Brush Loop             | 4 3/4" Plastic Handle |
| 950325 | Deep Fryer Brush | Crimped Natural PBT Polyester | 1 3/8"         | 7 1/2"       | 28"            | Continuous             | 4 3/4" Plastic Handle |
| 950330 | Deep Fryer Brush | Crimped Black PBT Polyester   | 7/8"           | 10"          | 25"            | Continuous – "L" shape | 4 3/4" Plastic Handle |
| 950550 | Deep Fryer Brush | White Tampico                 | 2"             | 7 1/2"       | 28"            | Continuous             | 4 3/4" Plastic Handle |
| 950560 | Deep Fryer Brush | White Tampico                 | 2"             | 7 1/2"       | 22"            | Continuous – "L" shape | 4 3/4" Plastic Handle |

continue on next page →



| ITEM # | DESCRIPTION            | FILAMENT MATERIAL     | BRUSH DIAMETER | BRUSH LENGTH | OVERALL LENGTH | TIP STYLE     | END STYLE |
|--------|------------------------|-----------------------|----------------|--------------|----------------|---------------|-----------|
| 940001 | Percolator Brush       | Level Natural Nylon   | 1/2"           | 3 1/4"       | 11 3/4"        | Cut off       | 1/2" Loop |
| 950205 | Pastry Brush           | White Patent          | 1"             | 1 3/4"       | 9"             | Metal Ferrule | 3/4" Loop |
| 950299 | Coffee Urn Gauge Brush | Level Natural Nylon   | 5/8"           | 4"           | 24"            | Cut off       | 1/2" Loop |
| 951151 | Glass/Jar Brush        | Level Natural Nylon   | 2 3/8"         | 5"           | 17"            | Fan           | 3/4" Loop |
| 951152 | Glass/Jar Brush        | Crimped Natural Nylon | 2 3/8"         | 5"           | 15"            | Radial        | 3/4" Loop |
| 960044 | Beer Bottle Brush      | Level Natural Nylon   | 2 1/2"         | 4"           | 17"            | Wing          | 1/2" Loop |
| 960045 | Wine Bottle Brush      | Level Natural Nylon   | 3"             | 5"           | 17"            | Wing          | 1/2" Loop |

continue on next page →



| ITEM # | DESCRIPTION        | FILAMENT MATERIAL           | BRUSH DIAMETER | BRUSH LENGTH | OVERALL LENGTH | TIP STYLE   | END STYLE             |
|--------|--------------------|-----------------------------|----------------|--------------|----------------|-------------|-----------------------|
| 950015 | Vegetable Brush    | White Tampico               | 3 1/2"         | 3 1/2"       | 8"             | Brush Loop  | 3 3/4" Wood Handle    |
| 950109 | Vegetable Brush    | Level Natural Nylon         | 3 1/2"         | 3 1/2"       | 8"             | Brush Loop  | 3 3/4" Wood Handle    |
| 950108 | Dishwashing Brush  | Level Natural Nylon         | 3 1/2"         | 3 1/2"       | 11"            | Brush Loop  | 7" Wood Handle        |
| 950030 | Cotton Dish Mop    | Cotton Yarn                 | 3 1/2"         | 2 1/2"       | 10 3/4"        | Continuous  | 4 3/4" Plastic Handle |
| 950298 | Coffee Maker Brush | Level Black PBT Polyester   | 5" (Width)     | 7 1/2"       | 12"            | Fan         | 4 3/4" Plastic Handle |
| 950825 | Coffee Urn Brush   | Level Black Polypropylene   | 2 1/2"         | 7"           | 22"            | Radial      | 15" Plastic Handle    |
| 950830 | Coffee Urn Brush   | Crimped Black Polypropylene | 3 1/2"         | 6"           | 24"            | Tied Tufted | 15" Plastic Handle    |



950825



950298



950030

950015



950830

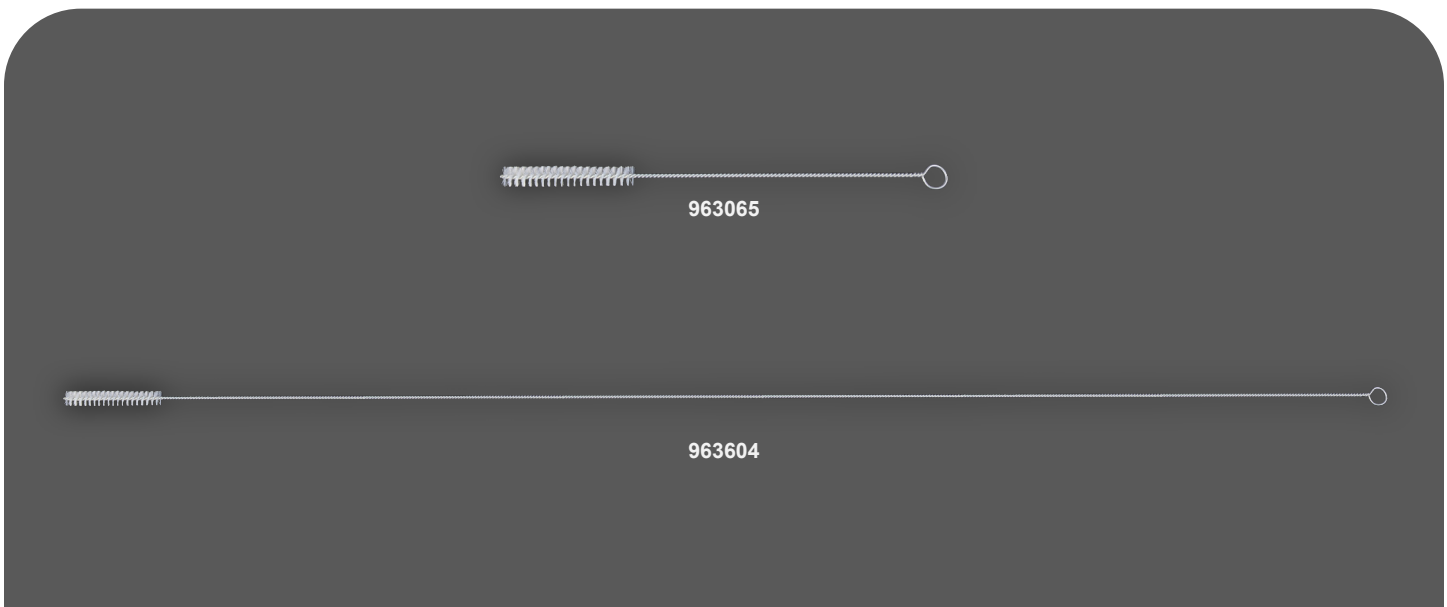
# HOMEBREWING

Homebrewing is a way to create your own beer or wine at your home. The process includes brewing in a kettle, fermenting yeast in an airlock carboy container and siphoning to a bottle. Once completed, all the equipment needs to be thoroughly cleaned to maintain flavor for the next batch. Brushes for containers or bottles have a fan or radial tip to clean the bottom. Brushes for siphon tubes have a narrow diameter and flexible wire.

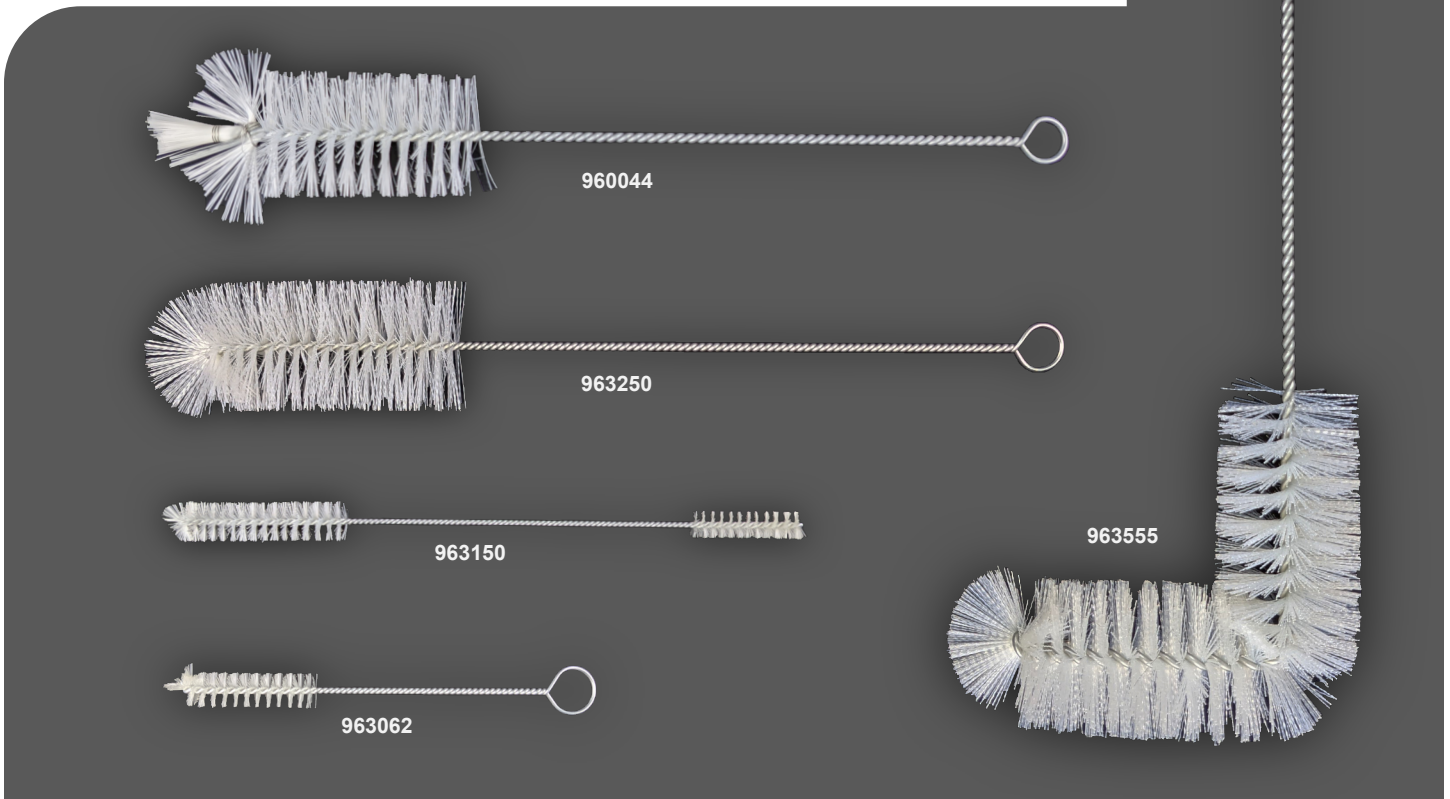
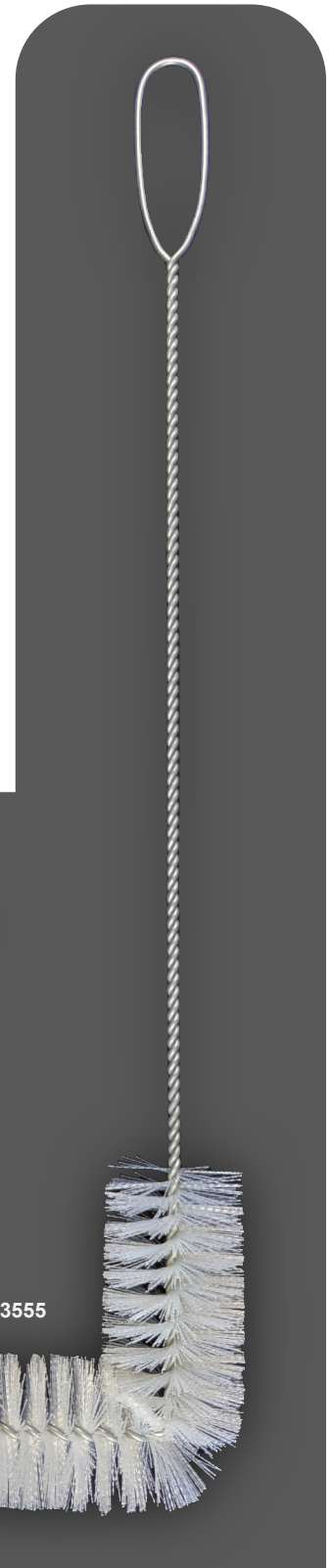
Our stock homebrewing brushes are designed to clean all equipment and containers for the homebrewing process. All stock brushes are readily available to ship. You can find the stock specifications below. If you need any adjustments, contact us or submit a custom brush request.

| ITEM # | DESCRIPTION | FILAMENT MATERIAL   | BRUSH DIAMETER | BRUSH LENGTH | OVERALL LENGTH | TIP STYLE | END STYLE |
|--------|-------------|---------------------|----------------|--------------|----------------|-----------|-----------|
| 963066 | Tube Brush  | Level Natural Nylon | 3/8"           | 2 5/8"       | 7 1/2"         | Cut off   | 3/4" Loop |
| 963202 | Tube Brush  | Level Natural Nylon | 1/4"           | 2"           | 10"            | Cut off   | 1/2" Loop |
| 963600 | Tube Brush  | Level Natural Nylon | 3/16"          | 3"           | 48"            | Cut off   | 3/4" Loop |
| 963601 | Tube Brush  | Level Natural Nylon | 1/4"           | 3"           | 48"            | Cut off   | 3/4" Loop |
| 963602 | Tube Brush  | Level Natural Nylon | 5/16"          | 3"           | 48"            | Cut off   | 3/4" Loop |
| 963603 | Tube Brush  | Level Natural Nylon | 3/8"           | 3 1/2"       | 48"            | Cut off   | 3/4" Loop |
| 963604 | Tube Brush  | Level Natural Nylon | 1/2"           | 4"           | 48"            | Cut off   | 3/4" Loop |
| 963605 | Tube Brush  | Level Natural Nylon | 1"             | 4"           | 48"            | Cut off   | 3/4" Loop |
| 963606 | Tube Brush  | Level Natural Nylon | 1/4"           | 3 1/2"       | 36"            | Cut off   | 3/4" Loop |
| 963608 | Tube Brush  | Level Natural Nylon | 3/8"           | 3 1/2"       | 36"            | Cut off   | 3/4" Loop |

continue on next page →



| ITEM # | DESCRIPTION         | FILAMENT MATERIAL             | BRUSH DIAMETER           | BRUSH LENGTH         | OVERALL LENGTH | TIP STYLE     | END STYLE     |
|--------|---------------------|-------------------------------|--------------------------|----------------------|----------------|---------------|---------------|
| 960044 | Beer Bottle Brush   | Level Natural Nylon           | 2 1/2"                   | 4"                   | 17"            | Wing          | 1/2" Loop     |
| 960045 | Wing Bottle Brush   | Level Natural Nylon           | 3"                       | 5"                   | 17"            | Wing          | 1/2" Loop     |
| 963062 | Airlock Brush       | Level Natural Nylon           | 5/8"                     | 2 5/8"               | 7 1/2"         | Fan           | 1/2" Loop     |
| 963150 | Double End Brush    | Level Natural Nylon           | 3/4" (Tip)<br>1/2" (End) | 3" (Tip)<br>2" (End) | 12 1/4"        | Fan           | Cut Off Brush |
| 963175 | Faucet Brush        | Level Natural Nylon           | 3/4"                     | 3 1/2"               | 8"             | Fan           | 1/2" Loop     |
| 963200 | Demi-John Brush     | Crimped Natural PBT Polyester | 6"                       | 11"                  | 36"            | Fan           | 3 1/2" Loop   |
| 963250 | Beer Bottle Brush   | Crimped Natural Nylon         | 2 1/2"                   | 4"                   | 17"            | Fan           | 3/4" Loop     |
| 963300 | Wine Bottle Brush   | Crimped Natural Nylon         | 3"                       | 5 3/4"               | 17"            | Fan           | 3/4" Loop     |
| 963450 | Gallon Brush        | Crimped Natural PBT Polyester | 4 1/2"                   | 9 1/4"               | 22"            | Fan           | 3 1/2" Loop   |
| 963555 | Carboy Bottle Brush | Crimped Natural PBT Polyester | 2 1/2"                   | 9"                   | 30"            | "L" shape Fan | 3 1/2" Loop   |
| 963556 | Mini-keg Brush      | Crimped Natural Nylon         | 1"                       | 5 3/4"               | 21"            | "L" shape Fan | 3/4" Loop     |



Industrial tube brushes are straight brushes with a loop end style and various tip styles. They are ideal for manual cleaning of tubes, cylindrical containers, piping, threads or even surfaces of industrial equipment. A radial or fan tip allows cleaning of the end in addition to the sides. Industrial tube brushes are used to clean tubes, cylindrical containers, pipes, threads, bottles or holes / bores.

Our stock tube brushes feature a wide range of diameters and tip styles to clean straight or curved tubing, pipes or vents. All stock brushes are readily available to ship. You can find the stock specifications below. If you need any adjustments, contact us or submit a custom brush request.



## Radial Tip Style

| ITEM #  | FILAMENT MATERIAL | BRUSH DIAMETER | BRUSH LENGTH | OVERALL LENGTH | END STYLE |
|---------|-------------------|----------------|--------------|----------------|-----------|
| 500806* | Level Black Nylon | 1/2"           | 3"           | 8"             | 1/2" Loop |
| 500908* | Level Black Nylon | 3/4"           | 3 1/2"       | 9"             | 1/2" Loop |
| 501112* | Level Black Nylon | 1 3/8"         | 4"           | 11"            | 3/4" Loop |
| 501314* | Level Black Nylon | 2"             | 5"           | 13"            | 3/4" Loop |
| 502016* | Level Black Nylon | 2 3/8"         | 6"           | 20"            | 3/4" Loop |
| 600806  | Black Bristle     | 3/4"           | 3 1/2"       | 9"             | 1/2" Loop |
| 600908  | Black Bristle     | 3/4"           | 3 1/2"       | 9"             | 1/2" Loop |
| 601112  | Black Bristle     | 1 3/8"         | 4"           | 11"            | 3/4" Loop |
| 601314  | Black Bristle     | 2"             | 5"           | 13"            | 3/4" Loop |

\* Add "N" for Level Natural Nylon

## Fan Tip Style

| ITEM #  | FILAMENT MATERIAL | BRUSH DIAMETER | BRUSH LENGTH | OVERALL LENGTH | END STYLE |
|---------|-------------------|----------------|--------------|----------------|-----------|
| 300503* | Level Black Nylon | 1/4"           | 1 1/2"       | 4 3/4"         | 1/2" Loop |
| 300508* | Level Black Nylon | 3/4"           | 1 1/2"       | 4 3/4"         | 1/2" Loop |
| 300707* | Level Black Nylon | 5/8"           | 3"           | 7"             | 1/2" Loop |
| 300908* | Level Black Nylon | 3/4"           | 3 3/8"       | 8 3/4"         | 1/2" Loop |
| 301210* | Level Black Nylon | 1"             | 4"           | 12"            | 3/4" Loop |
| 301212* | Level Black Nylon | 1 1/2"         | 4"           | 12"            | 3/4" Loop |
| 301214* | Level Black Nylon | 2"             | 4"           | 12"            | 3/4" Loop |
| 301716* | Level Black Nylon | 2 3/8"         | 5"           | 17"            | 3/4" Loop |

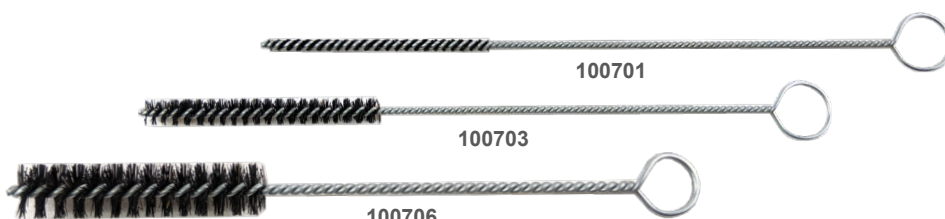
\* Add "N" for Level Natural Nylon

continue on next page →

## Cut Off Tip Style

| ITEM #  | FILAMENT MATERIAL | BRUSH DIAMETER | BRUSH LENGTH | OVERALL LENGTH | END STYLE |
|---------|-------------------|----------------|--------------|----------------|-----------|
| 100701  | Black Bristle     | 1/8"           | 2 1/4"       | 6 3/4"         | 1/2" Loop |
| 100702  | Black Bristle     | 3/16"          | 2 1/4"       | 6 3/4"         | 1/2" Loop |
| 100703  | Black Bristle     | 1/4"           | 2 1/4"       | 6 3/4"         | 1/2" Loop |
| 100704  | Black Bristle     | 5/16"          | 2 1/4"       | 6 3/4"         | 1/2" Loop |
| 100705  | Black Bristle     | 3/8"           | 2 1/4"       | 6 3/4"         | 1/2" Loop |
| 100706  | Black Bristle     | 1/2"           | 2 1/4"       | 6 3/4"         | 1/2" Loop |
| 101203  | Black Bristle     | 1/4"           | 4"           | 12"            | 1/2" Loop |
| 101205  | Black Bristle     | 3/8"           | 4"           | 12"            | 1/2" Loop |
| 101206  | Black Bristle     | 1/2"           | 4"           | 12"            | 1/2" Loop |
| 101208  | Black Bristle     | 3/4"           | 4"           | 12"            | 1/2" Loop |
| 101210  | Black Bristle     | 1"             | 4"           | 12"            | 1/2" Loop |
| 101611  | Black Bristle     | 1 1/4"         | 4"           | 16"            | 1/2" Loop |
| 101612  | Black Bristle     | 1 1/2"         | 4"           | 16"            | 1/2" Loop |
| 101613  | Black Bristle     | 1 3/4"         | 4"           | 16"            | 1/2" Loop |
| 101614  | Black Bristle     | 2"             | 4"           | 16"            | 1/2" Loop |
| 102406  | Black Bristle     | 1/2"           | 4"           | 24"            | 1/2" Loop |
| 102407  | Black Bristle     | 5/8"           | 4"           | 24"            | 1/2" Loop |
| 200702* | Level Black Nylon | 3/16"          | 2 1/4"       | 6 3/4"         | 1/2" Loop |
| 200703* | Level Black Nylon | 1/4"           | 2 1/4"       | 6 3/4"         | 1/2" Loop |
| 201003* | Level Black Nylon | 5/16"          | 2 1/2"       | 10"            | 1/2" Loop |
| 201204* | Level Black Nylon | 5/16"          | 2 1/2"       | 12"            | 1/2" Loop |
| 200906* | Level Black Nylon | 1/2"           | 3"           | 8 1/2"         | 1/2" Loop |
| 202406* | Level Black Nylon | 1/2"           | 4"           | 24"            | 1/2" Loop |
| 201217* | Level Black Nylon | 5/8"           | 4"           | 12"            | 1/2" Loop |
| 202417* | Level Black Nylon | 5/8"           | 4"           | 24"            | 1/2" Loop |
| 203410* | Level Black Nylon | 3/4"           | 4"           | 34"            | 3/4" Loop |
| 201618* | Level Black Nylon | 7/8"           | 4"           | 16"            | 3/4" Loop |
| 202411* | Level Black Nylon | 1"             | 4"           | 24"            | 3/4" Loop |
| 202412* | Level Black Nylon | 1 1/4"         | 4"           | 12"            | 3/4" Loop |
| 202413* | Level Black Nylon | 1 1/2"         | 4"           | 24"            | 3/4" Loop |
| 202415* | Level Black Nylon | 2"             | 4"           | 24"            | 3/4" Loop |

\* Add "N" for Level Natural Nylon



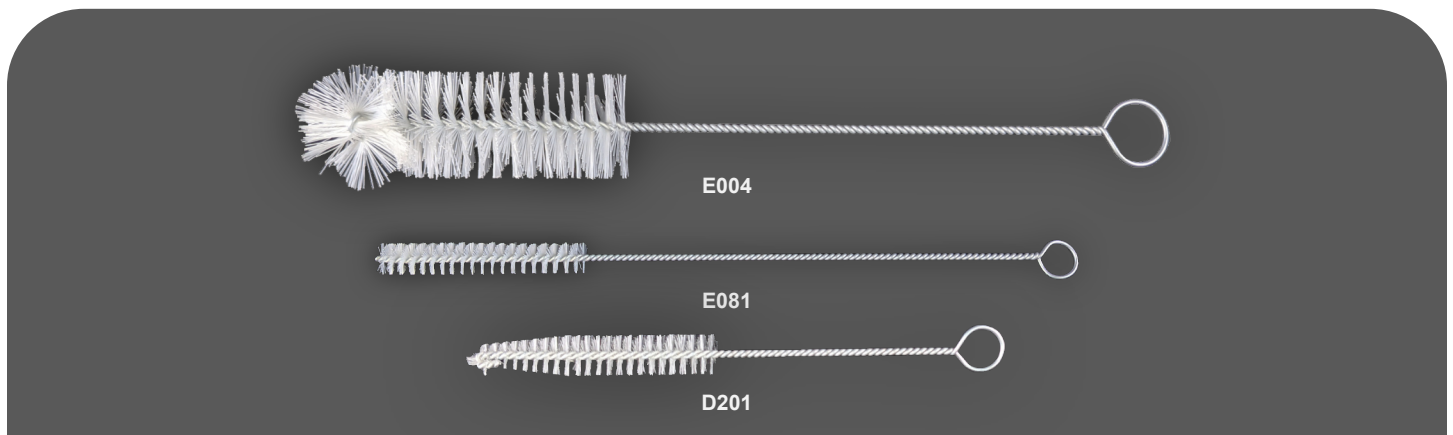
# MEDICAL & LABORATORY

Medical & Laboratory equipment processes various chemicals and needs to be sanitized properly to ensure accurate measurements and avoid contamination from previous batches. Medical & Laboratory brushes need to clean abrasive chemicals in long tubes and containers, such as beaker, flask, burette or Imhoff cone. The correct shape helps remove all chemicals from difficult spots in the container. Allied K&R is a U.S. Food and Drug Administration (FDA) registered manufacturer. Medical & laboratory brushes are used to clean glass beakers, flasks, burettes, imhoff cones, test tubes and pipettes.

Our stock medical & laboratory brushes offer unique shapes and FDA approved materials to effectively clean beakers, flasks and more. All stock brushes are readily available to ship. You can find the stock specifications below. If you need any adjustments, contact us or submit a custom brush request.

| ITEM # | DESCRIPTION       | FILAMENT MATERIAL     | BRUSH DIAMETER       | BRUSH LENGTH | OVERALL LENGTH | TIP STYLE | END STYLE |
|--------|-------------------|-----------------------|----------------------|--------------|----------------|-----------|-----------|
| D001   | Test Tube Brush   | White Natural Bristle | 1/2"                 | 3"           | 8"             | Radial    | 1/2" Loop |
| D002   | Test Tube Brush   | White Natural Bristle | 3/4"                 | 3 1/2"       | 9"             | Radial    | 1/2" Loop |
| D004   | Test Tube Brush   | White Natural Bristle | 1 3/8"               | 4"           | 11"            | Radial    | 3/4" Loop |
| D081   | Narrow Tube Brush | White Natural Bristle | 1/2"                 | 2 1/2"       | 9"             | Cut off   | 1/2" Loop |
| D083   | Narrow Tube Brush | White Natural Bristle | 1/2"                 | 2 1/2"       | 12"            | Cut off   | 1/2" Loop |
| D087   | Narrow Tube Brush | White Natural Bristle | 3/4"                 | 3 1/2"       | 14"            | Cut off   | 1/2" Loop |
| D201   | Micro Tube Brush  | Level Natural Nylon   | 1/2" tapered to 1/4" | 3"           | 7"             | Fan       | 1/2" Loop |
| E001   | Test Tube Brush   | Level Natural Nylon   | 1/2"                 | 3"           | 8"             | Radial    | 1/2" Loop |
| E002   | Test Tube Brush   | Level Natural Nylon   | 3/4"                 | 3 1/2"       | 9"             | Radial    | 1/2" Loop |
| E004   | Test Tube Brush   | Level Natural Nylon   | 1 3/8"               | 4"           | 11"            | Radial    | 3/4" Loop |
| E081   | Narrow Tube Brush | Level Natural Nylon   | 1/2"                 | 2 1/2"       | 9"             | Cut off   | 1/2" Loop |
| E083   | Narrow Tube Brush | Level Natural Nylon   | 1/2"                 | 2 1/2"       | 12"            | Cut off   | 1/2" Loop |
| E087   | Narrow Tube Brush | Level Natural Nylon   | 3/4"                 | 3 1/2"       | 14"            | Cut off   | 1/2" Loop |

continue on next page →







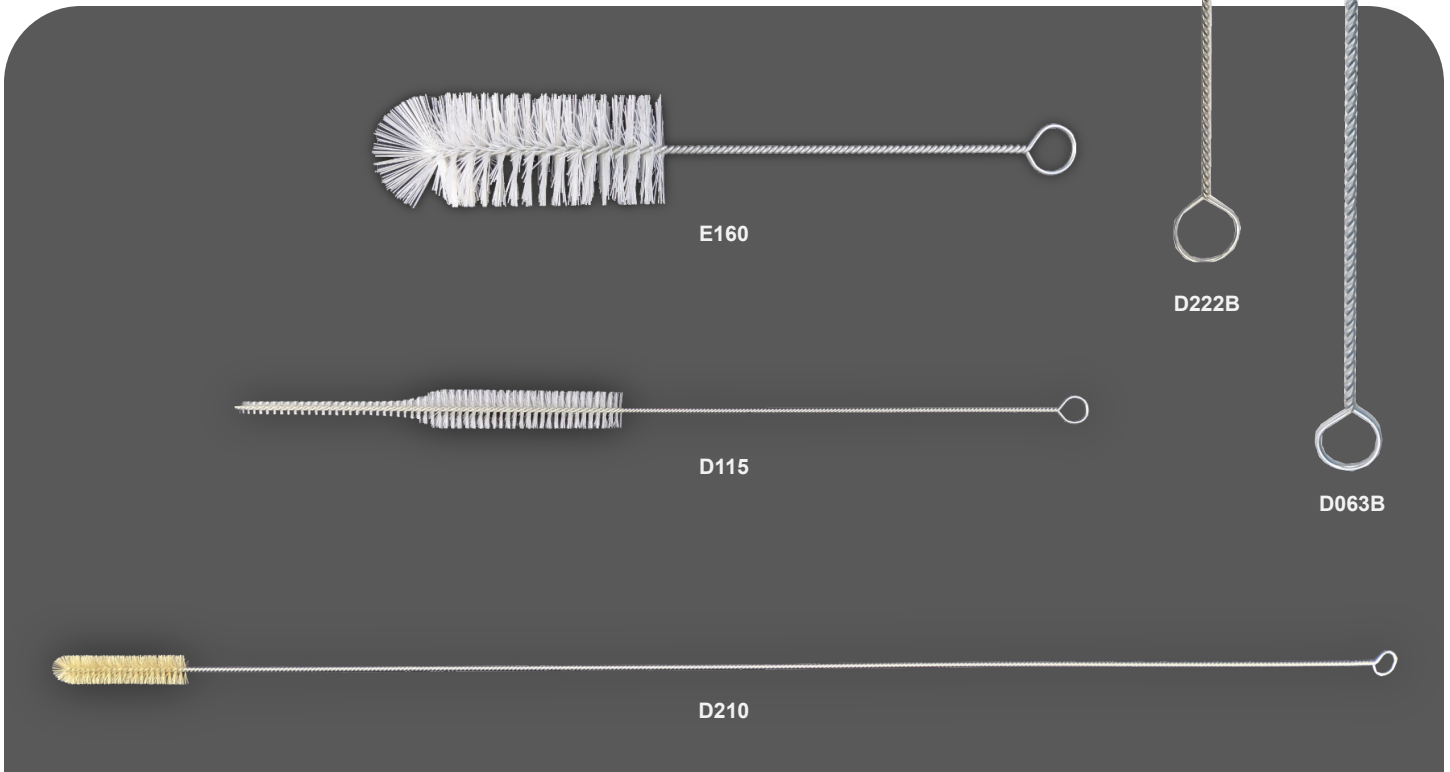
Custom Brushes  
Engineered for Deep Cleaning

# MEDICAL & LABORATORY

continued

| ITEM # | DESCRIPTION                    | FILAMENT MATERIAL          | BRUSH DIAMETER                | BRUSH LENGTH | OVERALL LENGTH | TIP STYLE | END STYLE |
|--------|--------------------------------|----------------------------|-------------------------------|--------------|----------------|-----------|-----------|
| D063B  | Cylinder/Bottle Brush          | Black Natural Bristle      | 2"                            | 5"           | 13"            | Radial    | ¾" Loop   |
| D065B  | Cylinder/Bottle Brush          | Black Horsehair & Poly Mix | 2 ⅜"                          | 6"           | 20"            | Radial    | ¾" Loop   |
| D115   | Pipette Brush                  | Level Natural Nylon        | ¾" (3 ½" long) & ½" (4" long) | 7 ½"         | 17"            | Cut off   | ½" Loop   |
| D160   | Nurse Bottle Brush             | White Natural Bristle      | 1 ¾"                          | 4 ½"         | 11 ½"          | Fan       | ¾" Loop   |
| D210   | Burette Brush                  | White Natural Bristle      | ¾"                            | 3 ¼"         | 36"            | Fan       | ½" Loop   |
| D211   | Burette Brush                  | White Natural Bristle      | ½"                            | 3 ¼"         | 30"            | Fan       | ½" Loop   |
| D212   | Burette Brush                  | White Natural Bristle      | 1 ¼"                          | 5 ¼"         | 36"            | Fan       | ½" Loop   |
| D222B  | Babcock Milk Test Bottle Brush | Black Natural Bristle      | 1 ½" (2" long) & ¼" (1" long) | 3 ¼"         | 9"             | Fan       | ½" Loop   |
| E063B  | Cylinder/Bottle Brush          | Level Black Nylon          | 2"                            | 5"           | 13"            | Radial    | ¾" Loop   |
| E065B  | Cylinder/Bottle Brush          | Level Black Nylon          | 2 ⅜"                          | 6"           | 20"            | Radial    | ¾" Loop   |
| E160   | Nurse Bottle Brush             | Level Natural Nylon        | 1 ¾"                          | 4 ½"         | 11 ½"          | Fan       | ¾" Loop   |

continue on next page →



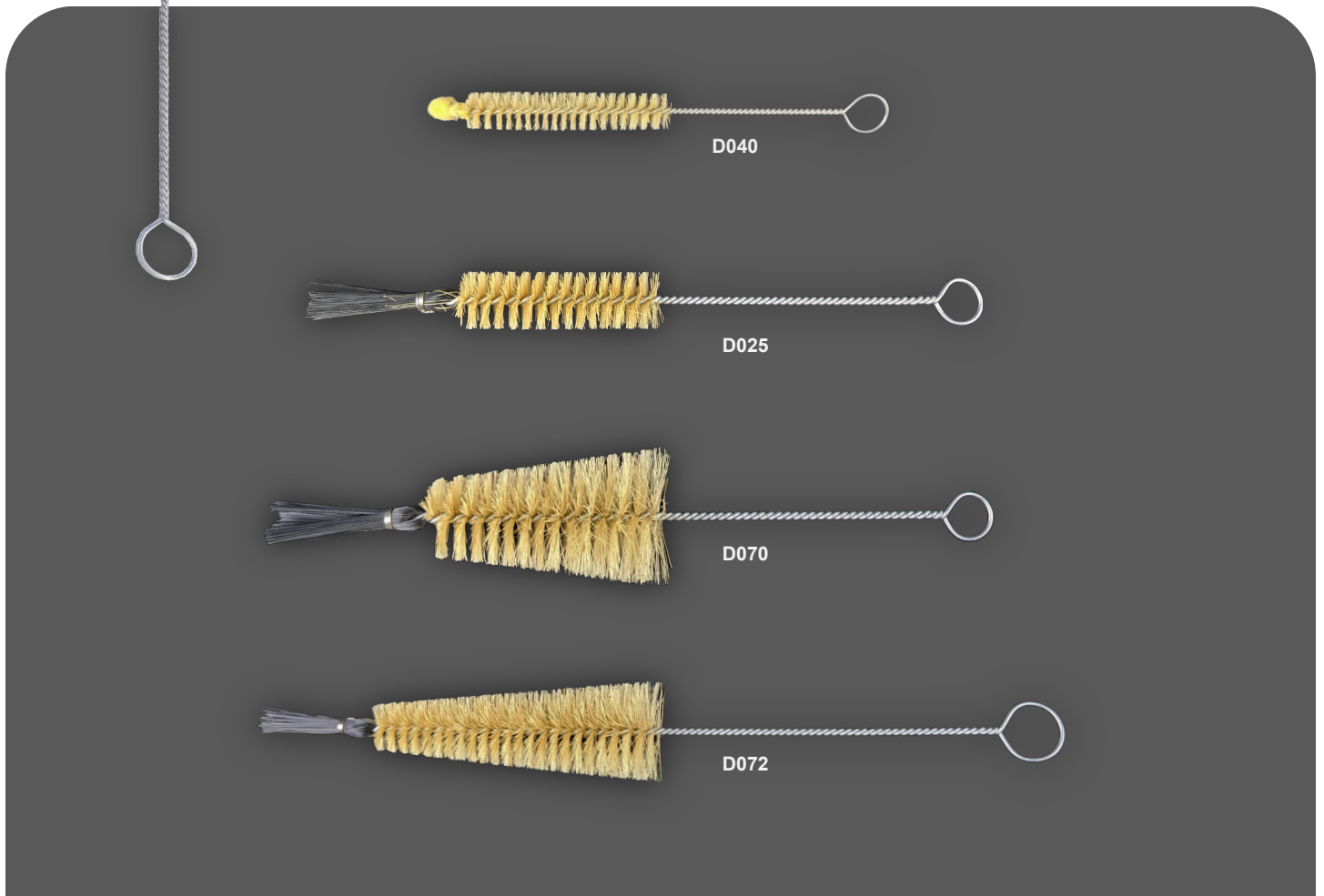
# MEDICAL & LABORATORY

continued



| ITEM # | DESCRIPTION        | FILAMENT MATERIAL                         | BRUSH DIAMETER         | BRUSH LENGTH | OVERALL LENGTH | TIP STYLE           | END STYLE |
|--------|--------------------|---|------------------------|--------------|----------------|---------------------|-----------|
| D025   | Test Tube Brush    | White Natural Bristle & Level Black Nylon | 3/4"                   | 3"           | 9"             | Tied Tufted         | 1/2" Loop |
| D040   | Test Tube Brush    | White Natural Bristle                     | 1/2"                   | 3"           | 6 1/4"         | Tied Sponge         | 1/2" Loop |
| D070   | Centrifuge Brush   | White Natural Bristle & Level Black Nylon | 1 3/4" tapered to 1"   | 3"           | 9 1/4"         | Tied Tufted         | 3/4" Loop |
| D072   | Centrifuge Brush   | White Natural Bristle & Level Black Nylon | 1 1/2" tapered to 3/4" | 4 1/2"       | 12 1/4"        | Tied Tufted         | 3/4" Loop |
| D135B  | Nurse Bottle Brush | Black Natural Bristle                     | 1 1/2"                 | 4 1/2"       | 12"            | Double Tufted & Fan | 1" Loop   |
| D136B  | Nurse Bottle Brush | Black Natural Bristle                     | 1 3/4"                 | 4 1/2"       | 16"            | Double Tufted & Fan | 1" Loop   |
| E100B  | Test Tube Brush    | Level Black Nylon                         | 1 1/2"                 | 4 3/4"       | 12"            | Tied Tufted         | 3/4" Loop |
| E103B  | Test Tube Brush    | Level Black Nylon                         | 2 3/8"                 | 5 1/4"       | 20"            | Tied Tufted         | 3/4" Loop |

continue on next page →





Custom Brushes  
Engineered for Deep Cleaning

# MEDICAL & LABORATORY

continued

| ITEM # | DESCRIPTION                       | FILAMENT MATERIAL                     | BRUSH DIAMETER     | BRUSH LENGTH | OVERALL LENGTH | TIP STYLE                | END STYLE             |
|--------|-----------------------------------|---------------------------------------|--------------------|--------------|----------------|--------------------------|-----------------------|
| D111B  | Beaker, Jar & Cylinder Brush      | Black Natural Bristle                 | 2 3/8"             | 6"           | 16"            | Brush Loop & Tied Tufted | 10" Wood Handle       |
| D112B  | Beaker, Jar & Cylinder Brush      | Black Natural Bristle                 | 3"                 | 6"           | 16"            | Brush Loop               | 10" Wood Handle       |
| D120B  | Graduate, Cylinder & Funnel Brush | Black Natural Bristle                 | 2 1/2"             | 4 1/2"       | 9"             | Double Tied Tufted       | 4 1/2" Wood Handle    |
| D130   | Volumetric Flask Brush            | White Natural Bristle                 | 1 3/8"             | 3 1/2"       | 12"            | Fan                      | 7 1/2" Plastic handle |
| D131   | Volumetric Flask Brush            | White Natural Bristle                 | 1 1/2"             | 4"           | 14"            | Fan                      | 9 1/2" Plastic handle |
| D132   | Volumetric Flask Brush            | White Natural Bristle                 | 1 3/4"             | 5"           | 17"            | Fan                      | 12" Plastic handle    |
| D301B  | Imhoff cone Brush                 | Black Natural Bristle & Natural Fibre | 4" tapered to 3/4" | 9 3/4"       | 24"            | Fan                      | 15" Wood Handle       |



D301B



D131



D120B



D112B



D111B

[WWW.ALLIEDKR.COM](http://WWW.ALLIEDKR.COM)

(718) 625-6610 | [INFO@ALLIEDKR.COM](mailto:INFO@ALLIEDKR.COM) | MADE IN USA

In addition to food processing equipment, restaurants have restrooms which need to be cleaned multiple times a day. Toilet/bowl brushes provide a convenient way to scrub equipment from a distance with the long handles. Sanitary bowl brushes have a range of abrasive filaments for deep cleaning to soft cleaning. Abrasive filaments can break up substances while soft filaments can clean stains. Special shapes can reach deep into sanitary equipment.

Our stock sanitary brushes feature abrasive filaments to clean toilet bowls, urinals or other bowl shapes. All stock brushes are readily available to ship. You can find the stock specifications below. If you need any adjustments, contact us or submit a custom brush request.

| ITEM # | DESCRIPTION       | FILAMENT MATERIAL | BRUSH DIAMETER | BRUSH LENGTH | OVERALL LENGTH | TIP STYLE  | END STYLE          |
|--------|-------------------|-------------------|----------------|--------------|----------------|------------|--------------------|
| 900033 | Toilet Bowl Brush | White Tampico     | 2 1/2"         | 9"           | 30"            | Brush Loop | 4 1/2" Wood Handle |
| 900792 | Toilet Bowl Brush | Level Black Nylon | 4 1/2"         | 5 1/2"       | 20 1/2"        | Brush Loop | 4 1/2" Wood Handle |
| 901212 | Toilet Bowl Brush | Level Black PP    | 5"             | 6 1/2"       | 22 1/2"        | Brush Loop | 16" Wood Handle    |
| 901216 | Toilet Bowl Brush | Mixed Union Fiber | 5"             | 6 1/2"       | 22 1/2"        | Brush Loop | 16" Wood Handle    |

continue on next page →



| ITEM # | DESCRIPTION       | FILAMENT MATERIAL        | BRUSH DIAMETER | BRUSH LENGTH | OVERALL LENGTH | TIP STYLE  | END STYLE       |
|--------|-------------------|--------------------------|----------------|--------------|----------------|------------|-----------------|
| 900006 | Toilet Bowl Brush | Level Black PP           | 4 1/2"         | 5 1/2"       | 20 1/2"        | Brush Loop | 15" Wood Handle |
| 900007 | Toilet Bowl Brush | Mixed Union Fiber        | 4 1/2"         | 5 1/2"       | 20 1/2"        | Brush Loop | 15" Wood Handle |
| 900008 | Toilet Bowl Brush | White Tampico            | 4 1/2"         | 5 1/2"       | 20 1/2"        | Brush Loop | 15" Wood Handle |
| 900009 | Toilet Bowl Brush | Level Natural Nylon      | 4 1/2"         | 5 1/2"       | 20 1/2"        | Brush Loop | 15" Wood Handle |
| 900010 | Toilet Bowl Brush | Level Natural Nylon      | 4 1/2"         | 5 1/2"       | 20 1/2"        | Brush Loop | 15" Wood Handle |
| 900011 | Toilet Bowl Brush | Crimped White PP         | 4 1/2"         | 5 1/2"       | 20 1/2"        | Brush Loop | 15" Wood Handle |
| 900076 | Toilet Bowl Brush | Level Tampico Colored PP | 4 1/2"         | 5 1/2"       | 20 1/2"        | Brush Loop | 15" Wood Handle |
| 901638 | Toilet Bowl Brush | Plastic                  | 4 1/4"         | 5"           | 17"            | Brush Loop | 12" Wood Handle |
| 901639 | Toilet Bowl Brush | White Tampico            | 4 1/4"         | 5"           | 17"            | Brush Loop | 12" Wood Handle |



900008

Visit [www.alliedkr.com](http://www.alliedkr.com) to browse all brushes with pictures, request quotes, learn about brush features and more!

(718) 625-6610 | [info@alliedkr.com](mailto:info@alliedkr.com)

Made In USA | [Request a Quote or Sample](#)



[Home](#) [Stock Brushes](#) [Custom Brushes](#) [Twisted-in-wire Brush Features](#) [Industries](#) [About](#)

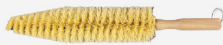
## High Quality Custom Brushes

We specialize in customizing and manufacturing industrial leading twisted-in-wire, spiral wound and wire wound brushes for commercial and industrial uses. We help design and develop brushes that meet your goals.

[DESIGN YOUR CUSTOM BRUSH](#)

### Check Out Our Brush Categories

Automotive



Duster



Food Service



Homebrewing



Medical Laboratory



Sanitary



Test Tube



Custom Brushes



[WWW.ALLIEDKR.COM](http://WWW.ALLIEDKR.COM)

(718) 625-6610 | [INFO@ALLIEDKR.COM](mailto:INFO@ALLIEDKR.COM) | MADE IN USA

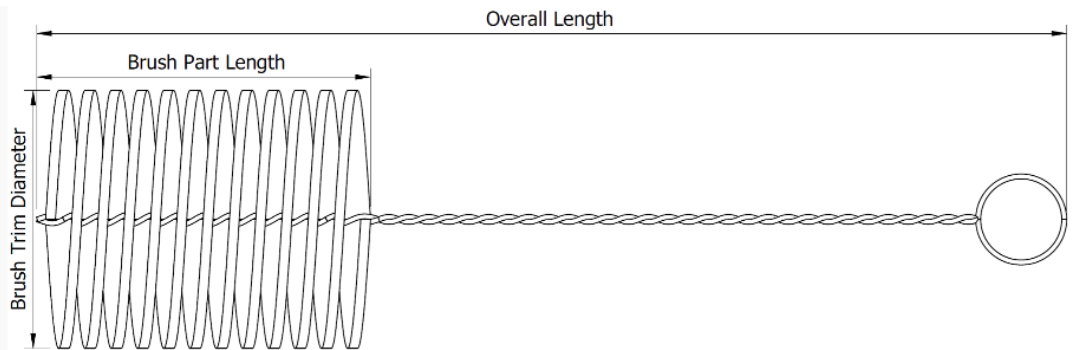
# Didn't find the perfect brush?

Let us build your custom brush! Visit [www.alliedkr.com/custom-brushes](http://www.alliedkr.com/custom-brushes) to send us all your specifications and receive a quote.

## Custom Brushes

### Twisted-in-wire Brush Model

Hover & click the area to see the required specifications for a custom brush.



Custom  
Filament, Wire & Handle  
Combinations



Multiple  
Filaments



Custom  
Tip/Ends



Phone: (718) 625-6610  
Fax: (718) 643-3741  
Email: [info@alliedkr.com](mailto:info@alliedkr.com)

39 Pearl Street  
Brooklyn, NY 11201  
USA

[www.alliedkr.com](http://www.alliedkr.com)

